



Library Display at National Co-ordination Provider Forum

The Problem Gambling Library display at the National Co-ordination Provider Forum highlighted the availability of the online catalogue and also the services provided by the library and librarian. Pamphlets outlining the steps on how to access the online catalogue (<http://pgfnz.infospecs.co.nz/>) were available along with copies of the 25 fact sheets produced by the Problem Gambling Librarian. The PGF 'SAY NO TO POKIES' were also available for purchase.

Problem gambling factsheets

The 25 PGFNZ factsheets are continually updated and are available from the Problem Gambling Library webpage www.pgfnz.org.nz/library/factsheets/ From generic New Zealand fact sheets to those covering ethnicity, age and gender there is something covered for all your public health needs. There are also three which look at fundraising and the ethics of using pokie grants.

Articles/ Books & Reports added Feb/March 2009

ASIAN

Lam Hing Po (2004) *Becoming pathological casino gamblers in Hong Kong. Do big winning experiences matter?* MA dissertation. University of Hong Kong.

Cheng Wai Kwan (2206) *From pathological gambling to help seeking: cases of female pathological gamblers in Hong Kong.* MA Dissertation. University of Hong Kong.

CRIME

KPMG (2009) *Forensic fraud survey 2008.* KPMG

FUNDRAISING

R Levy (2008) *Yours for the asking: An indispensable guide to fundraising and management.* London: Wiley

GAMBLING

N Tec (1964) *Gambling in Sweden.* Towana, NJ: Bedminister Press

INTERNET GAMBLING

M Griffiths, H Wardle & J Orford (2008) *Internet gambling: a secondary analysis of findings from the 2007 British Gambling Prevalence Survey.* UK Gambling Commission.

RT Wood & RJ Williams (2009) *Internet gambling: prevalence, patterns, problems and policy options.* Final report prepared for the Ontario Gambling Research Center.

SERVICES/PROGRAMMES

Australia. Cultural and Indigenous Research Centre. (October 2008) *Needs analysis of problem gambling counselling services for NSW CALD communities. Final report.* NSW Office of Liquor and Gaming.

V/F—ADVERTISING

S Monaghan et al (2009) Impact of gambling advertisements and marketing on children and adolescents: policy recommendations to minimize harm. *Gambling Issues* 22: 252-274.

**Please come and visit the library at PGFNZ Auckland Office
Level 1, 128 Khyber Pass Road, Grafton, Auckland.
Hours are 8.30am - 5.00pm during the week**



V/F—BEHAVIOUR

David Arthur et al (2008) The validity and reliability of four measures of gambling behaviour in a sample of Singapore University students. *Journal of Gambling Studies* 24.

Nady el-Guebaly, DM Casey, DC Hodgins (2008) Designing a longitudinal cohort study of gambling in Alberta: Rational, methods and challenges. *Journal of Gambling Studies* 24 (4): 479-504.

LS Pagani, JL Derevensky & C Japel (2009) Predicting gambling behavior in sixth grade from a kindergarten impulsivity. *Archives of Pediatrics and Adolescent Medicine*, 163(3):238-243.

V/F- CARD BASED TECHNOLOGY

Jonathan Parke et al. (2008) *Cashless and card-based technology in gambling: A review of the literature*. UK Gambling Commission.

V/F—COMORBIDITY

M Griffiths, W Wardle, J Orford (March 2009) *Gambling, alcohol consumption, cigarette smoking and health: Findings of the 2007 British Prevalence survey*. Commissioned by the UK Gambling Commission. Nottingham University. URL: <http://www.gamblingcommission.gov.uk/UploadDocs/publications/Document/PS%20secondary%20analysis%20Co-occurring%20disorders%20%20March%202009.pdf>

V/F- FAMILY

HG Wenzl et al. (2008) Gambling problems in the family—A stratified probability sample study of prevalence and reported consequences. *BMC—Public Health* 8.

F Ferland et al. (2008) Consequences of pathological gambling on the gambler and his spouse. *Journal of Gambling Issues* 22: 1-17. <http://>

www.camh.net/egambling/issue22/pdfs/04ferland-fournier.pdf

V/F—FAMILY VIOLENCE

Problem Gambling Research and Treatment Centre. (August 2008) Problem gambling and family violence in help-seeking populations: Prevalence, impact and coping

V/F-INTERNET

S Monaghan (2009) Responsible gambling strategies for Internet gambling: The theoretical and empirical base of using pop-up messages. *Computers in Human Behavior* 25, (1):202-207

V/F -NEAR MISSES

L Clark et al. (2008) Gambling near-misses enhance motivation to gamble and recruit win related brain circuitry. *Neuron* 61(3):481-90.

V/F—PUBLIC HEALTH

South Australian Council of Social Services (SACOSS) (Dec 2008) *The use of public health models for gambling help services*. SACOSS.

V/F - SELF EXCLUSION

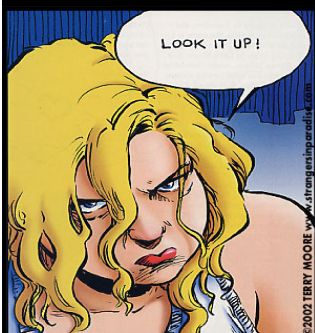
N Tremblay, C Boutin & R Ladouceur (2008) Improved self-exclusion program: Preliminary results. *Journal of Gambling Studies*, 24 (4):505-518.

V/F—TREATMENT

KS Leung & LB Cottler (2008) Treatment of pathological gambling. *Current Opinion on Psychiatry* 22 (1).

V/F—YOUTH

GM Barnes et al (2009) Gambling, alcohol, and other substance use among youth in the United States. *Journal of Studies on Alcohol and Drugs* 70 (1).



Glenda Northey MLIS, MA (Hons)
Research Librarian
Problem Gambling Foundation of New Zealand
Floor 1, 128 Khyber Pass Road, Grafton.
P.O. Box 8021, Symonds Street,
Auckland
368 1520 x 236
DDI 369 0619
Fax +64 9 368 1540
glenda.northey@pgfnz.org.nz
www.pgfnz.org.nz and www.pgfnz.org.nz/library/